



DEP **MeshWorks**

The new reference for accelerating your CAE workflows

DEP MeshWorks is a powerful software suite dedicated to Finite Element (FE) modeling phases. A trusted tool in meshing, morphing, and workflow automation, DEP MeshWorks speeds up product development cycles and delivers innovative solutions for engineers across numerous industrial sectors.

Designed by CAE engineers for CAE engineers



DEP MeshWorks.
5,000+ users worldwide

Industries:

Automotive. Aerospace. Defense. Naval.
Energy/Nuclear. Manufacturing. Consumer
Products. Biomedical. and more

DEP Europe. A Unique Premium Experience

- Focused on customer satisfaction
- Encourage Proof of Concept and Evaluation phases
- Autonomous Onboarding to software use in just days
- Integrated resources
- Easy ROI calculation for customers
- High quality technical support
- Flexible Training catalogue tailored to customer needs

www.depeurope.com

Key Strengths



Time Savings



Performance

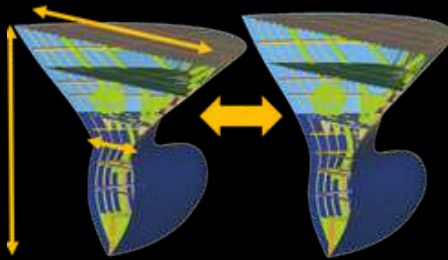


Seamless Integration



Flexibility & Agility

Power of CAE to Accelerate. Transform. Automate. Innovate.

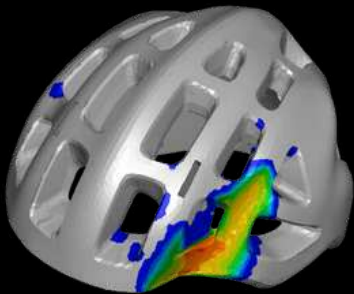
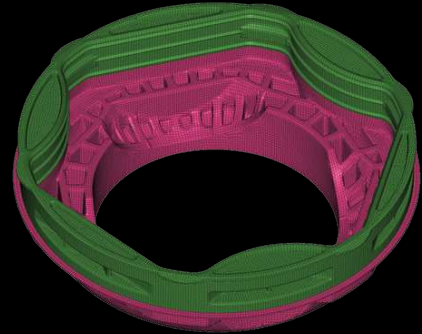


Direct FE Design & Morphing

Quick iterations directly at the FE level
Intelligent tools tailored to users' need
3D mapping for fast adaptation to new designs

Powerful Meshing Engine

Rapid QUAD, Mid-Surface and TETRA meshing
High-quality HEXA meshing for complex models
Support both Automated and Manual approaches

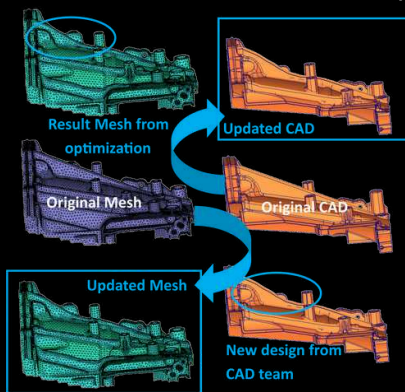


Multi-Solver Pre/Post Processing

Built-in CAD environment for Clean-up & Simplification
Compatibility with Ls-Dyna, Nastran, Abaqus, Ansys, etc
Advanced model assembly and integration features

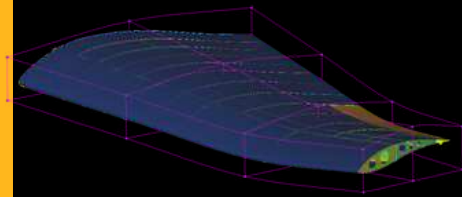
CAE Parameterization & Optimization

Effortless Design Of Experiments generation
Seamless Coupling with Ls-Opt, Mode Frontier, I-sight, etc
Design enablers



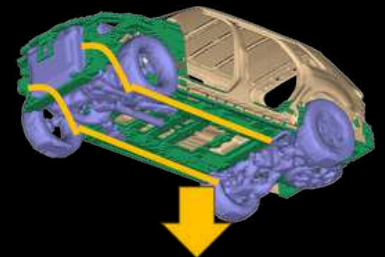
Efficient CAD Morphing

Automated tool to streamline product development
Aligns seamlessly with manufacturing requirements



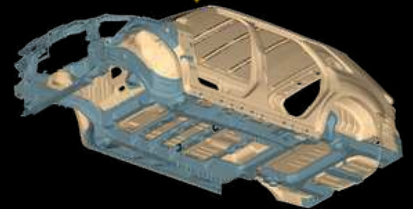
Concept Modeling

Design directly at the FE level
Transform detailed 3D models to 1D and vice versa
Drastic time savings in early design phases



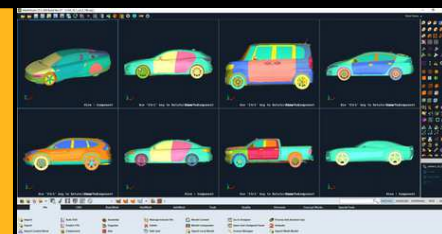
Process Automation

Intuitive user experience to automate specialized workflows
Substantial time savings after minimal setup investment



Intelligent IA/ML CAE Framework

Unique AI/ML platform with physics informed insights
Combines ML, Parametric CAE and Generative AI
Advanced technology with simple and direct user experience



Request a Demo or an Evaluation !



5, avenue Didier Daurat 31400 Toulouse, FRANCE



+33 5 61 44 54 98



email@depeurope.com



www.depeurope.com

